

SUSPENSION, MONO-SHOCK ROCKER SYSTEM

This is the same unique mono-shock system that's a part of our 4-link dragster chassis kit. This design utilizes a single coil over shock and combines the functions of actuating the shock and an anti-roll bar in one assembly. 12010 assembly as shown is with optional shock and spring, which are sold separately. Three different spring rates are available to suit various engine combinations.



12010 Rocker Assembly shown with available coil over

12010	Rocker Suspension Assembly (less shock)	731.00
12011	Splined Outer Rocker Arm (ea)	107.50
12017	Delrin® Shaft Bushing (ea)	31.56
12015	Adjuster Link, no rod ends (ea)	26.00
12019	Double Adjustable Shock (5" stroke no spring)	509.00
12019-225	Coil Spring (225#)	55.00
12019-275	Coil Spring (275#)	55.00
12019-400	Coil Spring (400#)	55.00

4-LINK & WISHBONE KITS



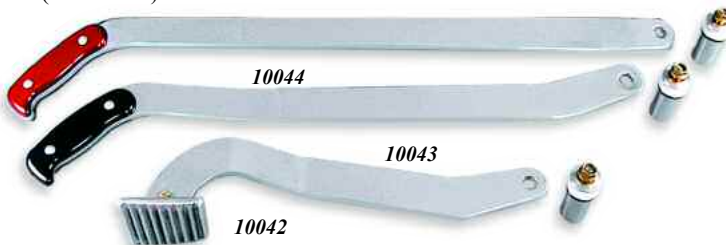
12020	Dragster/Altered 4 Link Kit	690.00
<i>Kit uses 1-1/8" x .083" tubing & 5/8" x 5/8" rod ends.</i>		
12021	Dragster Front 4 Link Bracket (ea)	32.00
12030	Dragster/Altered Wishbone Kit (ea)	190.00
<i>1/2" (2) and 5/8" (1) 4130 rod ends, aluminum slider shaft</i>		
97100	4 Link Kit for 96000/97000 Housing	949.00
<i>Kit uses 1-1/4" x .095 tubing & 5/8 x 3/4 rod ends.</i>		
97150	Front Chassis 4 Link Bracket (ea)	56.00

Mark Williams 4-link and wishbone kits include everything required to complete a standard 4-link rear suspension from the chassis to the housing. All kits include Aurora 4130 rod ends, jam nuts, tube adapters, M/W reduced hex shear shank bolts and locking jam nuts, and chromoly tubing. Both 4-link kits also include chromoly front chassis brackets.

LEVERS, PEDALS

MW brake levers and clutch/brake pedal are all CNC machined from 1/4" 6061 aluminum stock and fully polished to a bright luster. Both brake levers have anodized aluminum grips installed (red, blue, black, gold, or polished). Clutch/brake pedal features bolt-on foot pad with grooved non-slip surface. All include mounting stud #10040 (see below).

10042	Brake/Clutch Pedal	107.00
<i>With bolt on foot pad.</i>		
10043	Dragster Brake Lever	126.90
<i>Specify color of aluminum grips.</i>		
10044	Funny Car Brake Lever	132.40
<i>Specify color of anodized aluminum grips.</i>		

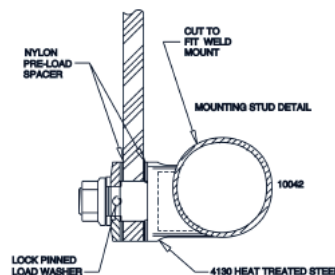


LEVER/PEDAL MOUNTING STUD



10040

This unique assembly makes mounting controls such as brake levers and/or pedals simple. The use of a keyed aluminum washer along with teflon washers on each side of the lever allows the tension to be adjusted without the possibility of the nut loosening during use. The main body is machined from 4130 alloy steel and can be cut to fit against chassis rail (as shown).



10040	Lever/Pedal Mounting Stud Assembly	51.00
-------	------------------------------------	-------

