

# HOUSING ENDS & RETAINERS

MW manufactures a full line of weld on housing ends. All housing ends are CNC machined from **4130 heat treated forgings** and are designed to butt weld to the housing tube and match the bolt patterns of most popular brake assemblies. Most MW housing ends are 2" long and have **provisions for inboard seals** that eliminates the possible gear oil leakage through the axle bearings. This extra length also reduces distortion problems of the bearing bore from final welding.



All Pro Street Housing ends use Timken® bearings and special outboard seals. Alignment tools are available to properly install the housing ends (page 58).

**NOTE: WE RECOMMEND USING THE SYMMETRICAL 58580 OR 58599 HOUSING ENDS FOR ALL APPLICATIONS USING AFTERMARKET DISC BRAKES.**

## SYMMETRICAL

58580 Symmetrical 4130 material (pr) . . .120.00  
For all 3.150 O.D. bearings. 4130 material fig. A

58581 Short Symmetrical Tapped (pr) . .111.88  
For all 3.150 O.D. bearings. 1" long. 3/8-24 threaded holes. fig. A

58585 Pro-Street Symmetrical (pr) . . .150.16  
For 58506 Timken® unit bearings. fig. A

## OLDS/PONTIAC

58500 Olds/Pontiac (pr) . . . . .120.00  
For all 3.150 O.D. bearings. fig. B

58501 Olds/Pontiac Retainers (pr) . . . . .29.00

58500H Olds/Pontiac Short (pr) . . . . .111.08  
For all 3.150 O.D. bearings. 1" long. fig. B

58590 Olds/Pontiac Short Ends (pr) . . .120.00  
For all 3.150 O.D. bearings. 1" long with 3/8-24 threaded holes. fig. B

## CHEVROLET

58400 Full Size GM (pr) . . . . .153.88  
For all 3.150 O.D. bearings. fig. C

58600 Standard GM (pr) . . . . .130.00  
For all 3.150 O.D. bearings. fig. D

58410 Full Size GM Retainers (pr) . . . . .29.00

58560 Standard GM Pro Street (pr) . . . . .175.96  
For 58506 Timken® unit bearings. fig. D

58230 Standard GM Retainers (pr) . . . . .29.00

## FORD

57800 Small Ford (pr) . . . . .110.00  
For all 3.150 O.D. bearings. fig. E

57830 Large Ford 1/2" Holes (pr) . . . . .123.88  
For all 3.150 O.D. bearings. fig. F

57801 Small Ford Retainers (pr) . . . . .29.00

57840 Lincoln 3/8" Holes (pr) . . . . .120.00  
For all 3.150 O.D. bearings. fig. F

57802 New Style Ford Retainers (pr) . . . . .29.00

57850 Lincoln 3/8" Holes Pro Street (pr) 110.00  
For 58506 Timken® unit bearings. fig. F

57804 Large Ford Retainers (pr) . . . . .29.00

57860 New Style Ford (pr) . . . . .120.00  
For all 3.150 O.D. bearings. fig. G

57805 Lincoln Retainer (pr) . . . . .29.00

57810 Small Ford Pro Street (pr) . . . . .110.00  
For 58506 Timken® unit bearings. fig. E

58510 8.8 Ford (pr) . . . . .212.44  
For all 3.150 O.D. bearings. Includes 3/8" backing plate studs. fig. H

57820 Large Ford 1/2" Holes Pro Street . .110.00  
For 58506 Timken® unit bearings. Pair fig. F

58511 8.8 Ford Retainers (pr) . . . . .29.00

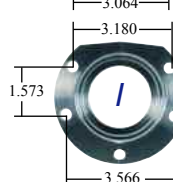
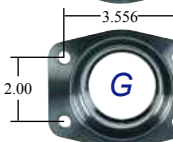
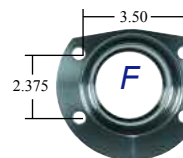
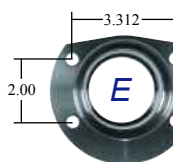
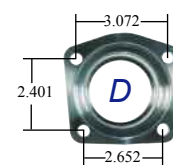
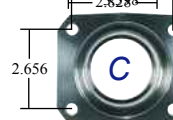
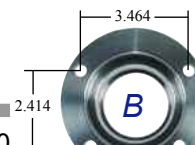
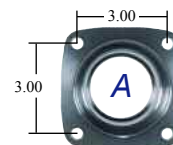
## MOPAR

53184 Mopar Long(pr) . . . . .120.00  
For 56003 or 56001 bearings. For seal. fig. I

53189 Mopar (pr) . . . . .151.36  
For all 3.150 O.D. bearings. fig. I

53188 Mopar Pro Street (pr) . . . . .157.72  
For 58506 Timken® unit bearings. fig. I

56501 Mopar Retainers (pr) . . . . .29.00



toll free  
**800-525-1963**

on the web  
**www.markwilliams.com** 57